



Cambridge Curriculum

Building Global Futures

Chanakya The Global School for Intellectuals
Nurturing Curiosity

Presented by **Jinal Dasgupta**

Chanakya The Global School for Intellectuals

- Prestigious private English-medium school located on New Satpati Road, Dhansar, Palghar (West).
- Established in 2017 and positioned as one of the first IGCSE/Cambridge curriculum schools in the area.
- Co-educational setup offering education from Pre-Primary up to Class 10.



Chairman's Message

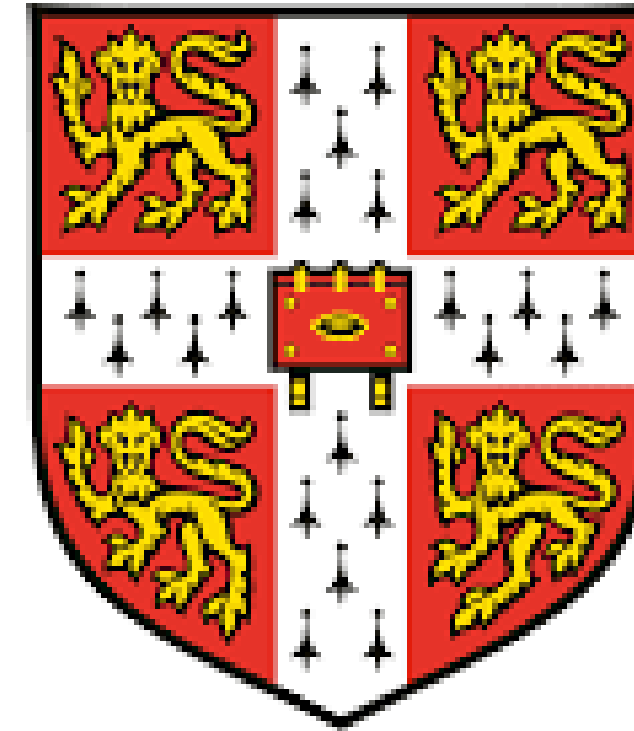
Dear Parents, Education is undoubtedly the most important input for the progress of a country. The initial years of schooling generally decide the direction of the future journey

- Systematic and academic approach to meet modern challenges
- Nurturing intellectual, physical, and spiritual growth
- Welcoming students from all backgrounds with equal love



What is Cambridge All About?

- An internationally recognized education system
- Followed in more than 160 countries
- Focuses on concept based learning
- Develops analytical and problem solving skills
- Encourages creativity and independent thinking



UNIVERSITY OF
CAMBRIDGE

Attributes Of Cambridge Learners



Confident



Responsible



Reflective



Innovative



Engaged

Cambridge Program Structure



Primary (Ages 5–11)

Strong foundation in English, Math & Science
Focus on curiosity and communication

Lower Secondary (Ages 11–14)

- Skill development
- Subject specialization begins

IGCSE (Ages 14–16)

- International qualification
- Wide subject choices
- Skill-based assessment

AS & A Levels (Ages 16–19)

- Advanced subject mastery
- University preparation
- Globally accepted qualification

Why Choose Cambridge for Your Child?

➔ Global Recognition

Accepted by top universities worldwide
Internationally respected qualification

➔ Flexible Subject Choices

Students choose subjects based on strengths and interests
Encourages passion-driven learning

➔ Skill-Based Learning

Critical thinking
Research ability
Communication skills
Independent learning

➔ English Language Excellence

Strong focus on reading, writing & speaking skills
Prepares students for global opportunities

➔ Future-Ready Education

Prepares students for careers in STEM, business, arts & more

Teaching & Learning Approach



**Inquiry-based
learning**

**Classroom
Discussions**

**Real-life
problem
solving**

**Project-based
assessments**

**Practical
understanding**

**Inquiry-based
learning**

Teaching & Learning Approach

**Practical
understanding**

**Classroom
discussions**

**Project-based
assessments**

**Real-life problem
solving**



Assessment Style:

**Written
exams**

Coursework

**Practical
evaluations**

**Internal &
external
assessments**

**Less rote
learning
More
application of
knowledge**

01

02

03

04

05

Admission Process

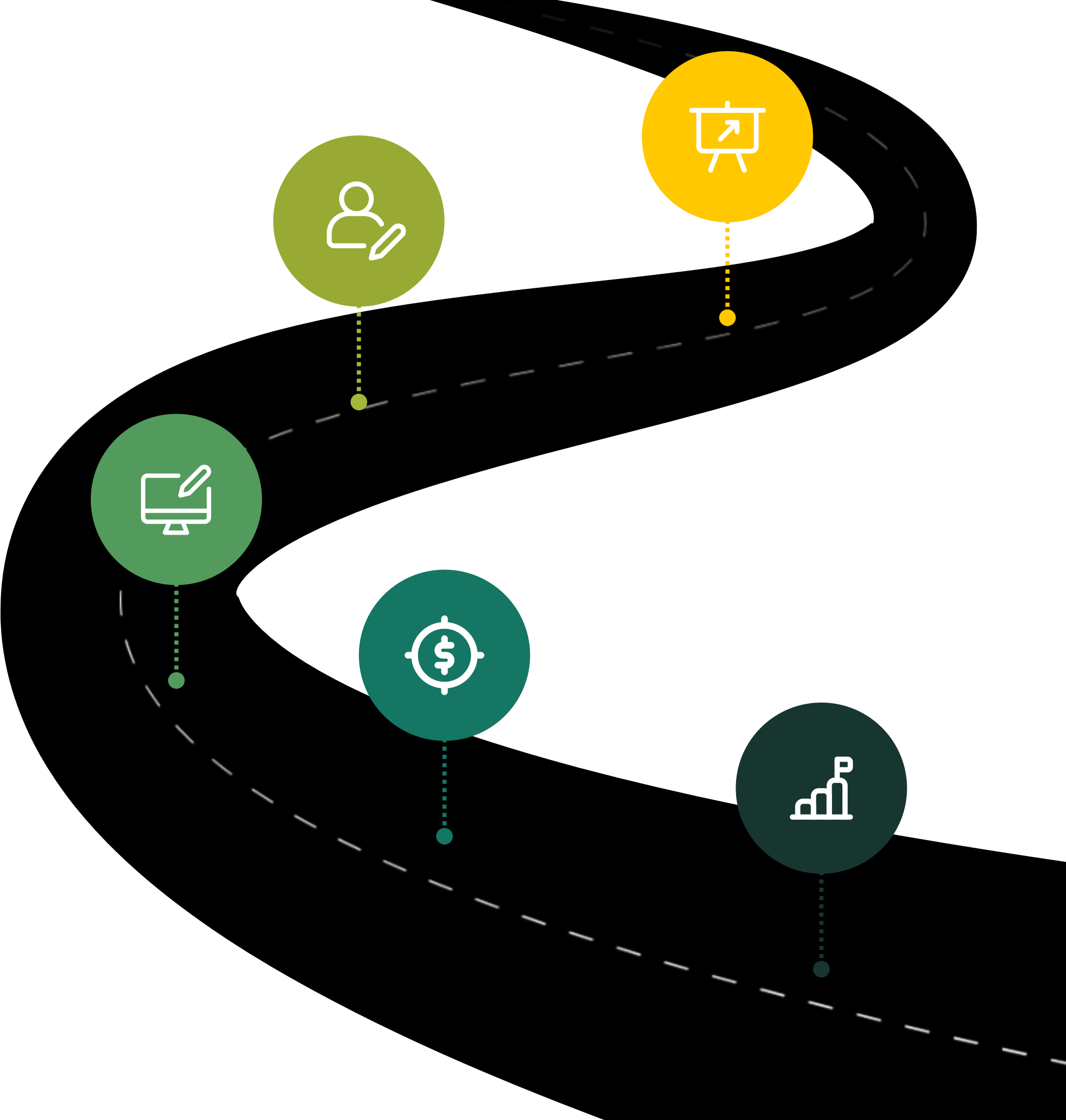
01 Application form submission

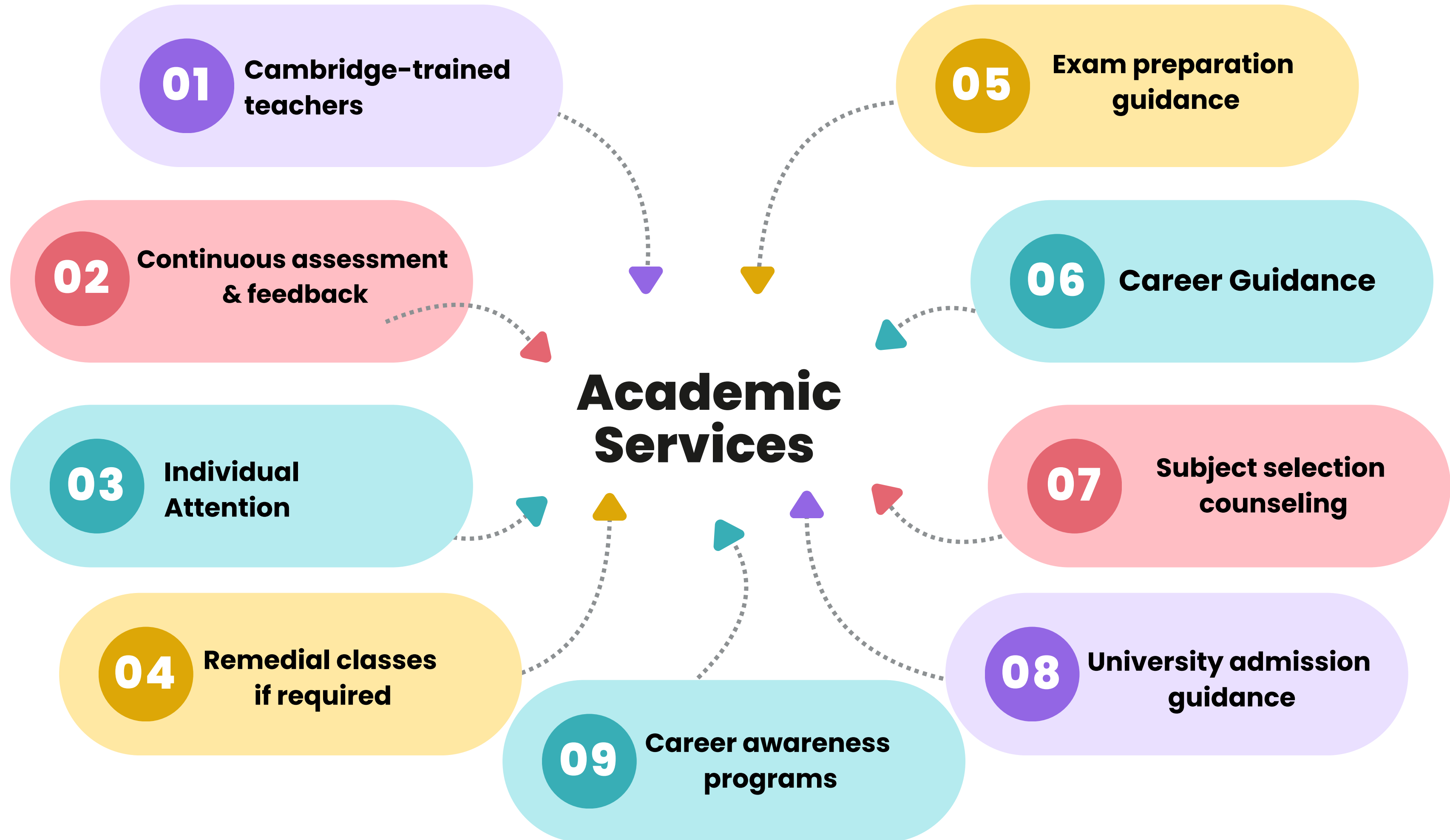
02 Academic record review

03 Entrance assessment (if applicable)

04 Student & parent interaction

05 Admission confirmation





Student Support & Safety

Parents value safety most.

01

Student Welfare Services

02

Safe & secure campus

03

CCTV monitoring

04

Trained pastoral care staff

05

School counselor availability

06

Anti-bullying policies

07

Parent Communication

08

Regular parent-teacher meetings

09

Academic progress reports

10

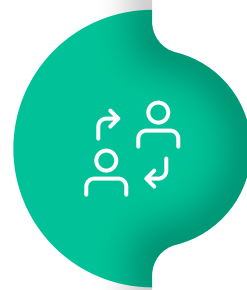
Open communication channels

Co-Curricular & Holistic Development



**Sports, Skating
&
physical
education**

01



**Music &
performing
arts**

02



**Debate &
public
speaking**

03



**Science
fairs &
competitions**

04



**Leadership
programs**

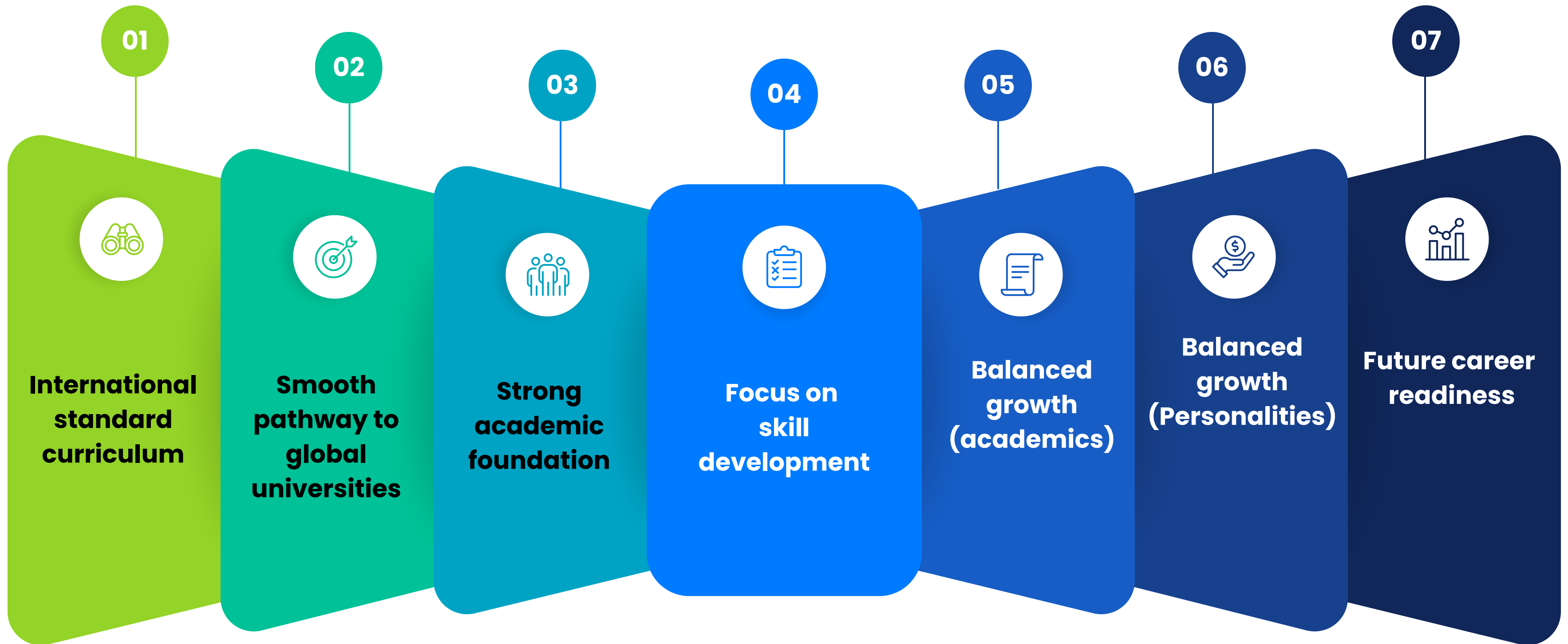
05



**Community
service
activities**

06

Why Parents Prefer Cambridge Schools

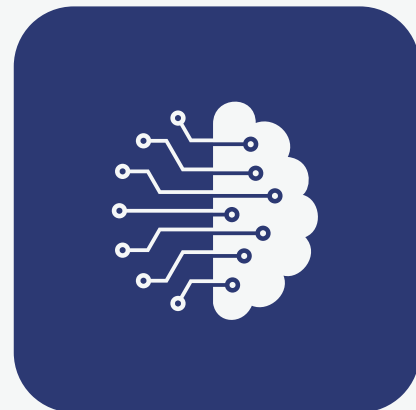




CONCLUSION



Knowledge



Skills



Confidence



**Global
Exposure**



**Strong
Character**